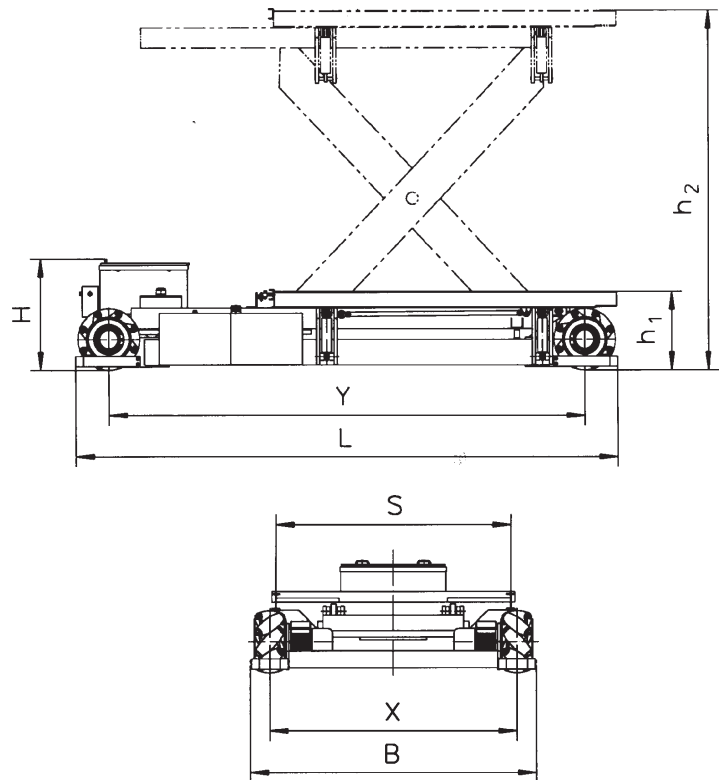




Engine positioner

TWW



- A carrier capable of moving like an air cushion vehicle
- Minimum space for manoeuvring but a high degree of precision
- Manual control by a simple joystick, supported by a board computer
- Battery drive

TWW ... E Technical Data



Technical Data Engine positioner TWW ..E

Discription

1.1	Manufacturer (Make [abbreviation])		MIAG			MIAG		MIAG
1.2	Type designation of the manufacturer		TWW 75E			C-LGF 50		APF 5
1.3	Design		Base module*			Module***		Module****
1.4	Drive Battery, Diesel, Petrol, fuel gas, mains current		Battery			-		-
1.5	Operation Hand, Pedestrian, stand-on, driver-seated		Pedestrian			Pedestr./Stand on		Pedestr./Stand on
1.6	Height of the rail system, min. / max.	mm	780 / 3500			800 Parkposition		800 Parkposition
1.7	Working height		-			5690		6060
1.8	Mobile fully lifted		yes			yes		yes
1.9	Load capacity, max. (personal + tools + material (engine))	kg	7500			5000		500
1.10	Length of rail system, (length of contact)	mm	3800			3800		4 x 20
1.11	Gap of rail system	Inch	90			90 or 120		90 or 120
1.12	Tilting functions (via TWW)		+/- 5			+/- 5		+/- 5
1.13			-			-		-
1.14			-			-		-
1.15			-			-		-

Weights

2.1	Total weight incl. battery	kg	8500			2500		2000
2.2	Battery weight	kg	1280			-		-
2.3	Wheel load, max.	kg	4000			-		-

Wheels, Chassis

3.1	Roller coating material		Vulkollan®			-		-
3.2	Roller dimensions (Ø x B) / number of rollers	mm	128 x 300 / 8			-		-
3.3	Wheels number front / rear, x = driven (diagonal equal)		2 / 2, 4x			-		-
3.4	Wheel dimensions (Ø x B)	mm	600 x 312			-		-
3.5	Track width	mm	2410			-		-
3.6			-			-		-

Base dimensions

4.1	Platform height, min. / max. on TWW	mm	-			970 x 3690		1340 / 4060
4.2	Platform dimension (L x W)	mm	-			3850 x 2630		5300 x 3000
4.3	Platform extensions, right / left	mm	-			450 / 450		-
4.4	Height of crane on platform (parking position)	mm	-			1650		-
4.5	Dimensions for transportation (L x W x H)	mm	5300x2800x1100			3850x2630x2500		5300x3000x1630
4.6	Clearance to ground	mm	65			-		-

Performance

5.1	Driving speed , lifted / fully lowered	m/s	0-1 / 0 -0,5			-		-
5.2	Positioning speed in all directions, max.	m/s	0,2			-		-
5.3	Lifting speed, with load	s	120			-		-
5.4	Service brake / number of involved wheels		electrical / 4			-		-
5.5	Parking brake		electro-mechan.			-		-

E-Motor

6.1	Type of traction motor, number x output		asynchr., 4x8			-		-
6.2	Type of lift motor, number x output	kW	asynchr., 1x8			-		-
6.3	Battery voltage / capacity	V / Ah	80 / 450			-		-
6.4						-		-

Others

7.1	Steering		Driving and lifting functions via joystick.			Driving and lifting functions via joystick.		All functions via TWW remote control
			Lifting-functions proportional.			Lifting-functions proportional.		
			(radio remote)			(radio remote)		

* Engine positioner for 7,5t load

**

*** Module for landing gear changes

**** Module as an aerial work platform