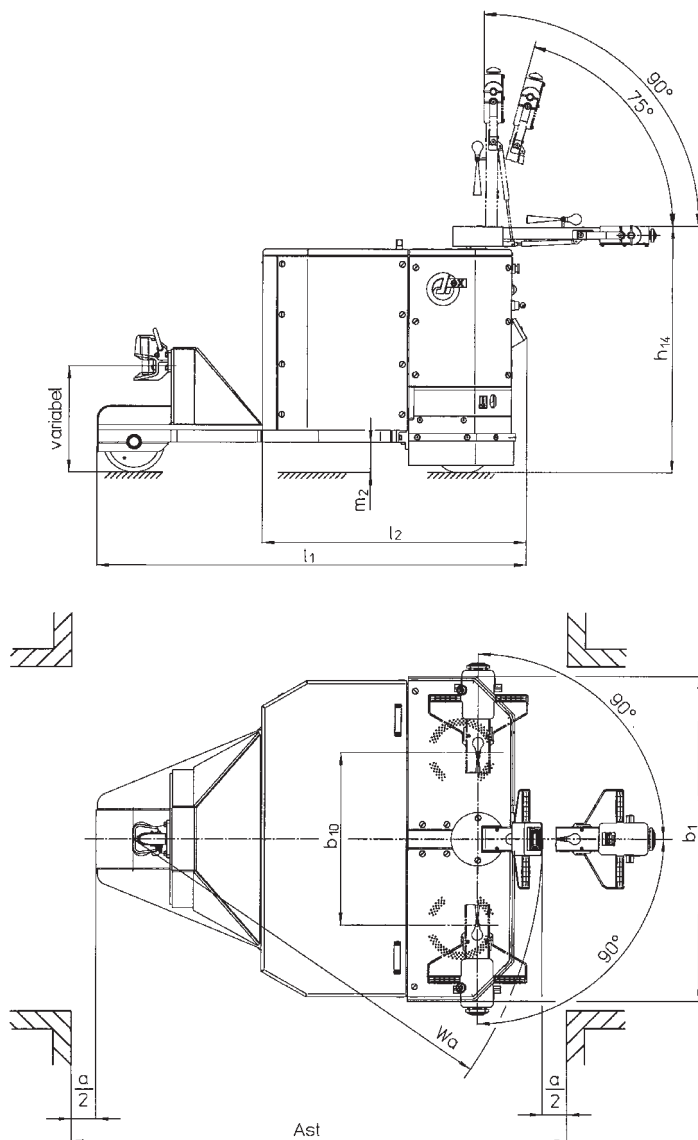




Pedestrian Electric Tractor
Explosion-proof

EGZ



EGZ 50-100XE2 /..H2 /..ST
Technical Data

MIAG Fahrzeugbau GmbH
Kocherstr. 1, 38120 Braunschweig
Fon ++49 (0531) 8 66 01-0
Fax ++49 (0531) 8 66 01-50
www.miag.de / info@miag.de



Technical Data

Pedestrian Electric Tractor

(in accord. with VDI 2198)

EGZ 50-100XE2 /..H2 /..ST electronic, explosion-proof

Explosion protection: the devices are tested and approved by the Physikalisch Technische Bundesanstalt (PTB) (Physical-Technical Federal Institute) for use in areas at risk of explosion according to the following protection classes***: Gas explosion protection - suitable for use in explosive areas, zones 1 and 2 according to BetrSichV within explosion sub-groups IIA and IIB or IIB + H2 and temperature classes T1 to T4 and 120°C; Dust explosion protection: - suitable for use in explosive areas, zones 21 and 22 according to BetrSichV at surface temperatures of maximum 115°C.

Description

1.1	Manufacturer (Make [abbreviation])		MIAG	MIAG	MIAG
1.2	Type designation of the manufacturer		EGZ 50XE2 ..	EGZ 80XE2 ..	EGZ 100XE2 ..
1.3	Drive Battery, Diesel, Petrol, fuel gas, mains current		Battery	Battery	Battery
1.4	Operation Hand, Pedestrian, stand-on, driver-seated		Pedestrian	Pedestrian	Pedestrian
1.5	Carrying capacity / Load **	Q (t)	-	-	-
1.6	Load centre	c (mm)	-	-	-
1.7	Rated tractive power	F (N)	3000	3500	4000
1.8	Load distance, mast lowered	x (mm)	-	-	-
1.9	Wheel base	y (mm)	1340	1340	1340

Weights

2.1	Dead weight	kg	1500	1550	1600
2.2	Axle load laden front/rear	kg	-	-	-
2.3	Axle load unladen front/rear	kg	1050 / 450	1100 / 450	1150 / 450

Wheels, Chassis

3.1	Tyres Pneumatic, Solid, Vulcollan		Solid / Vul.	Solid / Vul.	Solid / Vul.
3.2	Dimension in front		Ø260 x 85	Ø260 x 85	Ø260 x 85
3.3	Dimension at the rear		Ø250 x 130	Ø250 x 130	Ø250 x 130
3.4	Additional wheels (dimensions)		-	-	-
3.5	Wheels number front / rear, x=driven		1, 2x / 1	1, 2x / 1	1, 2x / 1
3.6	Truck width front	b_{10} (mm)	710	710	710
3.7	Truck width rear	b_{11} (mm)	-	-	-

Base dimensions

4.4	Lift	h_3 (mm)	-	-	-
4.9	Height of handle unit (in drive position) min. / max.	h_{14} (mm)	1013	1013	1013
4.12					
4.15	Height lowered	h_{13} (mm)	-	-	-
4.19	Length total	l_1 (mm)	1750	1750	1750
4.20	Length including shank	l_2 (mm)	1073	1073	1073
4.21	Width total	b_1/b_2 (mm)	1340	1340	1340
4.22	Fork dimensions	$s/e/l$ (mm)	-	-	-
4.25	Outside spread of fork arms	b_5 (mm)	-	-	-
4.32	Ground clearance centre wheel base (lowest point)	m_1/m_2 (mm)	124	124	124
4.33	Aisle width for pallets 1000x1200 along *	A_{st} (mm)	-	-	-
4.34	Aisle width for pallets 800x1200 along *	A_{st} (mm)	2022	2022	2022
4.35	Turning radius *	W_a (mm)	1673	1673	1673

Performance

5.1	Speed travel laden / unladen	km / h	3 / 3,5	3 / 3,5	3 / 3,5
5.2	Speed lift laden / unladen	m / s	-	-	-
5.3	Speed lower laden / unladen	m / s	-	-	-
5.5	Tractive power laden / unladen (outside expl.-proof area)	N	-	-	-
5.6	max. tractive power laden/unladen (outs. expl.-proof area)	N	-	-	-
5.7	Climbing capacity with / without load	%	4 / 6	2 / 6	1 / 6
5.8	Max. gradeability laden / unladen	%	-	-	-
5.10	Service brake		electrical	electrical	electrical

E-Motor

6.1	Traction- / Lift motor, output / 1 hour rating	kW	2 x 2,7	2 x 2,7	2 x 2,7
6.2					
6.3	Battery according to DIN 43531 / 35 / 36, A / B / C, no		no	no	no
6.4	Battery voltage / Capacity K_s	V / Ah	24 / 210, 240, 270, 315, 345, 375		
6.5	Battery weight	kg	min. 310		
6.6					

Others

8.1	Motor control type		Pulse	Pulse	Pulse

* in accordance with FEM 4.005

** design with battery roll out device

*** depending on device version